

The WFC Flyer

JUNE 2010



Important Dates

General Meeting

June 10, 2010
7:00 PM
Clubhouse

Board Meeting

July 1, 2010
7:00 PM
Clubhouse

Club Officers

President

Joe Ebert
joe.ebert@rochester.rr.com

Vice President

Lance Merritt
piperlance@gmail.com

Treasurer

Bob Herloski
herloski@rochester.rr.com

Secretary

Bob Cournoyer
rcourno999@aol.com

Directors

Bill Bach
bbach@frontiernet.net

Tom Henderson
thenderson@nye-tech.com

Chris Karpenko
christopher.j.karpenko@usps.gov



Photo by J. Griebsch

Mercy Flight uses KSDC regularly for meeting local ambulance crews to transport patients to area hospitals.

From the President by Joe Ebert

Airport Serves the Community

Williamson-Sodus, the only airport in Wayne County with a paved runway, provides a "county airport" size facility to the surrounding communities **at no cost to the local residents or town or county governments.** For over fifty years, the airport has grown steadily. Now we are home to over 70 aircraft and provide over a half dozen full- and part-time jobs. A greater benefit to the surrounding community is that local companies use our facility to take their business activities all over the country. The airport makes a direct contribution, just by being here, to the success of those companies and their employees and families. We welcome our role of being a "silent partner" in support of the local economy.

A New Approach

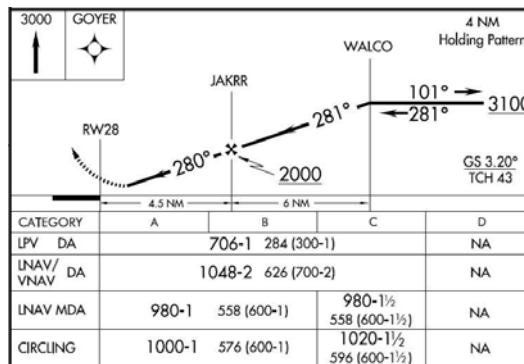
On June 3, the FAA published our new RNAV GPS Approach to Runway 28, which contains an LPV size approach which provides GPS-based vertical guidance with a decision height only 284' AGL. Three years in development and preparation, it is a new feature that only makes our airport more useful and a greater benefit to the community.

When We're Needed Most

About once a week or so, as pictured above, Mercy Flight and local ambulance crews use Williamson-Sodus Airport as a meeting place to transfer seriously ill or injured patients from ambulances to helicopters. This dramatically shortens the time patients get to hospitals in that all-important "golden hour" when care is crucial.

Williamson-Sodus also serves as a base of operations for the Coast Guard Auxiliary. From here, search and rescue operations are conducted all over Lake Ontario.

Oh, and not to forget, we are also training future airline and military pilots who go on to serve the greater community with skills they learn right here, in Wayne County.



A portion of the newly-published approach plate.

The 2010 Pancake Breakfast by Bill Bach

This year's pancake breakfast was a success by any measure. Primarily, the event was notable as we had absolutely beautiful weather. The good weather allowed over 60 airplanes to fly in. We haven't seen that number of aircraft in several years going back to 2002.

Over 1,800 breakfasts were served. Even though the lines were long, folks commented that they moved quickly. Our cooking crews were able to keep the lines moving due to hard work, coordination and the fact that the grills had gotten a "Field Overhaul" and were all working beautifully.



I would like to thank the folks

who came out Wednesday night for grill setup. Nearly 30 people lent a hand and the grills were up in less than an hour. Around 50 club members volunteered on Saturday and we were enjoying the noon lunch by eleven o'clock!

The day of the event, about a hundred members showed up to help—that's the highest level of member participation in recent memory and I want to thank everyone who pitched in.

Thank you to the County Sheriff for lending officers and cadets as

well as the Sodus Town Ambulance Corps and the Williamson Composite Squadron of the Civil Air Patrol for their valuable help. Thank you to the Rochester National Guard for bringing a Blackhawk helicopter and crew. Many of our guests enjoyed the rare opportunity to speak to our Armed Services members and we were honored to have them here.

Last and certainly not least, the Williamson Flying Club extends its thanks and appreciation to the communities of Williamson and Sodus for another year of overwhelming support of our Pancake Breakfast.

We are proud to be part of the Apple Blossom Festival and part of the local tradition. Thank you all!



Best Wishes & Come Visit Us by Archie & Louise Woodworth

To all WFC members,

Louise and I are moving back home to North Carolina. We would like to say "thanks to each and everyone of you for the friendships and wonderful memories" while we were members of your club ... each of you will be very much missed. The move to NC is one Louise and I were planning to take a few years from now ... however, our departure was accelerated by a job offer from a large pediatrics practice for Louise and my retirement from Xerox.

On my way out the door, I would like to take a moment to remind each club member just how fortunate you are that WFC exists. There are few other flying clubs or organizations like WFC around our country, not to mention WFC's world-class facilities ... please don't take it for granted. WFC offers numerous benefits to both pilots as well as non-pilots (normal people); a tradition that was started over 50 years ago. Please freely volunteer your time and energy to help ensure WFC's future.

We wish each of you good health and fortune and hope to hear from and see you all in the future. Please feel free to call us, if you are passing through the area. We are only a few minutes from KECG - Elizabeth City Coast Guard Air Station located in the northeast part of North Carolina (west of Kitty Hawk).

Keep 'em flying...

Best wishes,

Archie & Louise Woodworth